



# Eaton ePDU G3 range extension EMEA

New form factor 1U and 2U

New Dual Input In-Line Metered

# New form factor 1U and 2U

## ePDU G3 Platform

2014/2015  
ePDU G3 0U

2016 Q2  
ePDU G3 1U/2U  
Basic  
Metered Input  
In-Line metered Dual

2016 Q4  
ePDU G3 1U/2U  
Metered Outlet  
Switched  
Managed



# New form factor range

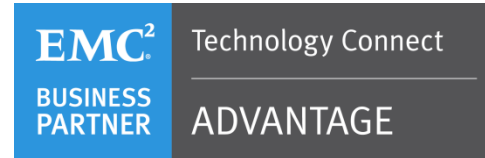
Launching date: **20th of June 2016**

TECHNOLOGY	P/N	Phase	Input Type / Rating	Breakers	Outlet Type	Dimension
<b>Basic</b>	EBAH11	3P	309 32A	6	C19x6	<b>1U</b> x19"x203
<b>Metered input</b>	EMIH02	1P	C14 10A		C13x8	<b>1U</b> x19"x203
	EMIH28	1P	C20 16A		C13x8	<b>1U</b> x19"x203
	EMIH06	1P	309 32A	2	C13x12:C19x4	<b>2U</b> x19"x127
<b>In-line metered</b>	EILB24	1P	2x309 16A		309 16A 1Px2	443x65x52
	EILB25	1P	2x309 32A		309 32A 1Px2	443x65x52
	EILB26	3P	2x309 32A		309 32A 3Px2	443x65x52
<b>Switched</b>	ESWH02*	1P	C14 10A		C13x8	<b>1U</b>
	ESWH72*	1P	309 16A		C13x8	<b>1U</b>
	ESWH84*	1P	309 32A	2	C13x16	<b>2U</b>
<b>Metered Outlet</b>	EMOH72*	1P	309 16A		C13x8	<b>1U</b>
	EMOH84*	1P	309 32A	2	C13x16	<b>2U</b>
<b>Managed</b>	EMAH72*	1P	309 16A		C13x8	<b>1U</b>

\* Technical specification will be confirmed later in 2016

***All models come with a 3 meters input cable***

# Partners and validated solutions



Microsoft Partner Network



# Typical applications

- Easily fit on smaller rack
- SMB, remote office, branch office
- Rack enclosure with no rear access
- Converged Infrastructure and Hyperconverged environment



# Value Proposition



**Improved IT  
efficiency**



**Lower costs**



**Improved  
Business Continuity**

Differentiation Points	Why It Matters?
<ul style="list-style-type: none"> <li>○ Accurate metering of power usage</li> <li>○ En masse configuration and upgrade</li> <li>○ Remote site management</li> <li>○ Personalized threshold alarms on power or environmental events</li> </ul>	User friendly solutions to set-up multiple ePDUs and be aware of your power distribution availability
<ul style="list-style-type: none"> <li>○ Monitor power consumption</li> <li>○ Daisy chain 8 units to reduce your network cost</li> <li>○ Inbuilt IEC plug retention works with your existing cables</li> </ul>	Optimize cost and utilize all available power
<ul style="list-style-type: none"> <li>○ High reliability, including hot-swap features</li> <li>○ Operates up to 60°C</li> <li>○ Enable VM migration during utility service interruption</li> </ul>	To ensure business uptime without downtime

# New ePDU G3 Basic 1U

P/N	Phase	Input Type / Rating	Breakers	Outlet Type	Dimension
EBAH11	3P	309 32A	6	C19x6	1Ux19"x203

## Grip – IEC Plug Retention

Prevents accidental disconnect from being bumped or from vibration, retains all standard IEC C14 and C20 plugs

## 60° Operating Temperature

ePDU G3 can be used in very hot environments.  
Take full advantage of ASHRAE guidelines



Colour-coded outlet and branch circuits for simple load balancing

	New P/N	Old P/N	Ph	Input type	Breakers	Outlets Type	Dimension
FlexPDU	EFLX8F	68435	1P	C20 16A		8Fr :C19x1	1Ux19"x80
	EFLX8D	68436	1P	C20 16A		8Din:C19x1	1Ux19"x80
	EFLX8B	68437	1P	C20 16A	2	6BS:C19x1	1Ux19"x80
	ELFX12I	68438	1P	C20 16A	2	C13x12	1Ux19"x80





# New ePDU G3 Metered Input 1U/2U

## IEC +/-1% Billing Grade Accuracy for V, W, A and kWh

Monitor equipment extremely accurately, including kWh for IT equipment over A and B feeds

P/N	Phase	Input Type / Rating	Outlet Type	Dimension
EMIH02	1P	C14 10A	C13x8	1Ux19"x203
EMIH28	1P	C20 16A	C13x8	1Ux19"x203
EMIH06	1P	309 32A	C13x12:C19x4	2Ux19"x127

## Real time notification & alarms

## Trigger advanced actions VMware SRM, vMotion on ePDU alerts with IPM



## Reduce Networking Cost & Traffic

Daisy chain 8 ePDUs from one IP port and one IP address, reducing both network costs and network traffic

## Central control module

Allows easy configuration via advanced LCD screen / USB or set up En Masse via Intelligent Power Manager software

## No Downtime on Upgrades

ePDU G3 has Hot-Swap network components – update or change without changing the outlet state



Hot swap module



# New In-Line Metered Dual

**Retro-fit** any basic ePDU to a Metered Input technology at the rack level and enjoy the benefits of the G3 module control !

P/N	Phase	Input Type / Rating	Outlet Type	Dimension
EILB24	1P	2x309 16A	309 16A 1Px2	443x65x52
EILB25	1P	2x309 32A	309 32A 1Px2	443x65x52
EILB26	3P	2x309 32A	309 32A 3Px2	443x65x52



The dual In-Line Metered allows two power sources to power-up two ePDUs

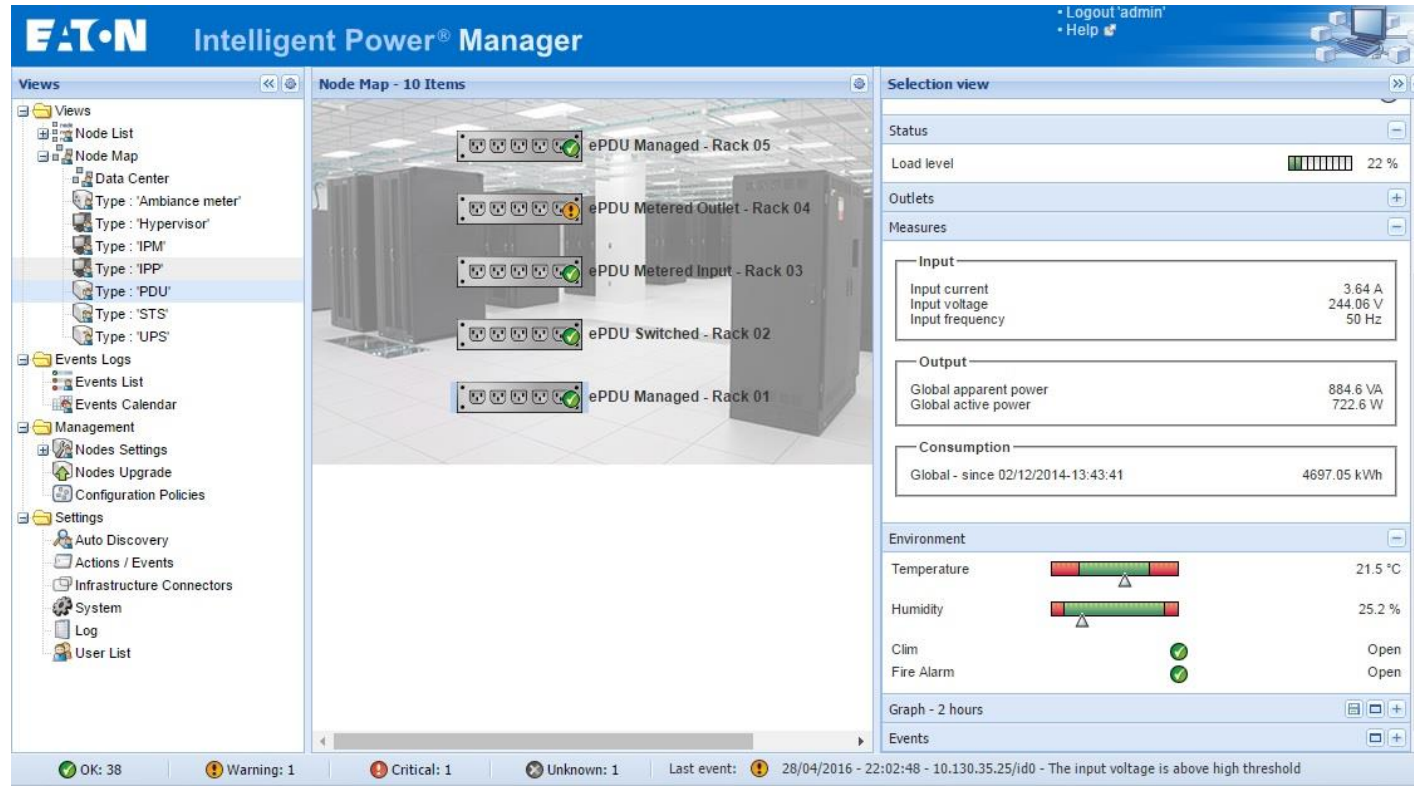
# Easy and flexible installation

- Fits on any rack
- Delivered with mounting system
- Multiple positioning system
  - Fit vertically
  - Horizontally on a rack
  - Under a surface



# ePDU G3 and Intelligent Power Manager

- Easily monitor, manage and create automated policy with IPM to ensure business continuity and receive real time notification
- Trigger advanced actions on virtual environment from ePDU or sensor events.



# ePDU G3 Accessories

Accessoires	P/N	Benefits
Cable ID tags	IDTAGxx ...	Identify and mark cables
Sensor	EMP001	Get live measurement on temperature, humidity, set threshold and be notified in real time
Adaptor Fast Ethernet Gigabit Ethernet	GBCONV	Quick and easy way to upgrade your 10/100 Mb network interface G3 ePDU to Gigabit speed
ePDU to UPS cables	CBL0UT32 CBL2OUT32	Connect an ePDU 32A input to the hardwire output UPS
Intelligent Power Manager	IPM Basic, Silver, Gold	Monitor and managed multiple ePDUs Trigger actions from ePDUs & sensor events



IDTAG16A  
IDTAG32A  
IDTAG16A3P



EMP001



GBCONV



CBL0UT32



CBL2OUT32

# Customized ePDU G3

[Dedicated Engineering Teams](#) in centres of excellence to work on specific configurations and significant projects to match customer's requirements

[Quotation](#) - 24 hour turnaround

- [National outlets](#) FR, DIN, BS on demand
- Choose the input cable length and input plug type
- [Add colors](#) to differentiate your sources



# Competitive cross reference

TECHNOLOGY	Eaton P/N	Description	APC p/n	Eaton advantages
Basic	EBAH11	1U (309 32A 3P)C19x6	AP7526	<ul style="list-style-type: none"> <li>• IEC outlet grip plug retention</li> <li>• color-coded outlet sections</li> <li>• 60°C Degree Operating Temp</li> </ul>
	EMIH02	1U (C14 10A 1P)C13x8	AP7820	<ul style="list-style-type: none"> <li>• IEC outlet grip plug retention</li> <li>• 60°C Degree Operating Temp</li> </ul>
Metered Input	EMIH28	1U (C20 16A 1P)C13x8	AP7821	<ul style="list-style-type: none"> <li>• advanced LCD pixel display</li> <li>• Hot swappable communications</li> <li>• daisy chain of IP addresses (8 vs 4)</li> </ul>
	EMIH06	2U (309 32A 1P)C13x12:C19x4	AP7822	<ul style="list-style-type: none"> <li>• ±1% billing grade accuracy (1% Vs 3-5%) Equipment Metering over A and B feed</li> <li>• color-coded outlet sections</li> <li>• Trigger VMware SRM actions (G3 via IPM), Equipment Graceful shutdown (G3 via IPM)</li> </ul>

# ePDU G3 Basic, Metered Input and In-Line Metered range

1 Phase

			Basic	In-Line Metered	Metered Input			
Input Type / Rating (A)	Outlet type: Qty	Breakers	Basic p/n	Dimensions L x W x D, mm	In-Line Metered & Dual p/n	Dimensions L x W x D, mm	Metered Input p/n	Dimensions L x W x D, mm
C14 10A	8XC13		EBAB02	443x52x53			EMIH02	1Ux19"x203
	12XC13		EBAB19	443x52x53				
	16XC13		EBAB03	704x52x53			EMIB03	1070x52x53
C20 16A	8XFR : 1XC19		EFLX8F*	1Ux19"x80				
	8XGE : 1XC19		EFLX8D*	1Ux19"x80				
	8XUK : 1XC19	2 single pole	EFLX6B*	52x19"x120				
	12XC13 : 1XC19	2 single pole	EFLX12I*	1Ux19"x80				
	16XC13		EBAB21	704x52x53				
	8XC13						EMIH28	1Ux19"x203
IEC60309 16A	18XC13 : 2XC19						EMIB09	1070x52x53
	20XC13 : 4XC19		EBAB22	1070x52x53				
	7XC13 : 1XC19							
	18XC13 : 2XC19						EMIB10	1070x52x53
	20XC13 : 4XC19		EBAB04	1070x52x53			EMIB04	1070x52x53
	IEC60309				EILB13	443x52x53		
Dual input	2 x IEC60309				EILB24	443x65x52		
IEC60309 32A	12XC13 : 4XC19	2 single pole					EMIB06 EMIH06	1070x52x53 2Ux19"x127
	20XC13 : 4XC19	2 single pole	EBAB05	1070x52x53			EMIB05	1154x52x53
	20XC13 : 2XC19 : 2XUK	2 single pole					EMIB16	1154x52x53
	20XC13 : 2XC19 : 2XFR	2 single pole					EMIB17	1154x52x53
	20XC13 : 2XC19 : 2XGE	2 single pole					EMIB18	1154x52x53
	36XC13 : 6XC19	2 single pole					EMIB08	1604x52x53
	IEC60309				EILB14	443x52x53		
	Dual input	2 x IEC60309				EILB25	443x65x52	

3 Phase

<b>IEC60309 16A 3P</b>	21XC13 : 3XC19							
	36XC13 : 6XC19		EBAB00	1604x52x53			EMIB00	1829x52x53
	6XC19	6 single pole	EBAB11	704x52x53	EILB15	443x52x53	EMIB11	1070x52x53
<b>IEC60309 32A 3P</b>			EBAB11	1Ux19"x203				
	3XC13 : 6XC19	6 single pole	EBAB01	704x52x53				
	6XC13 : 12XC19	6 single pole					EMIB07	1604x52x53
	18XC13 : 6XC19	6 single pole						
	12XC13 : 12XC19	6 single pole					EMIB12	1604x52x53
	30XC13 : 12XC19	6 single pole					EMIB34	1829x52x65
	IEC60309				EILB15	443x52x53		
<b>Dual input</b>	2 x IEC60309				EILB26	443x65x52		





*Powering Business Worldwide*