

Boeing 767 and 777 Cargo door actuator



Drew Fulkerson

Aftermarket Product Sales Manager
Fuel & Motion Control Division



Powering Business Worldwide

Agenda

- Issue / Application
- Background
- Solution
- Implementation
- Eaton value offer
- Questions / Comments

Issue / Application

692D100

Boeing 767 and 777 Cargo Door Actuator

Aircraft impact

- Accelerated wear on 692C130-1 Detent output gear
- Issue identified in Boeing Service Bulletin
- FAA Issued Airworthiness Directive



Issue / Application

Affected units

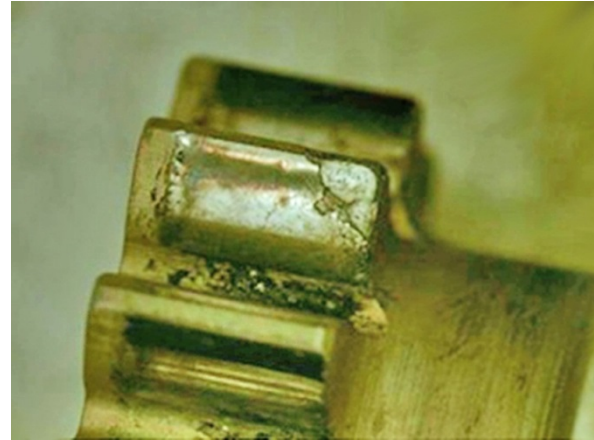
692D100-13 marked with no serial number suffix or suffix 'A'

Consequence

Failure causes the lower lobe cargo door system to become inoperable with the potential for uncommanded door closure, causing a possible safety risk to ground personnel

Background

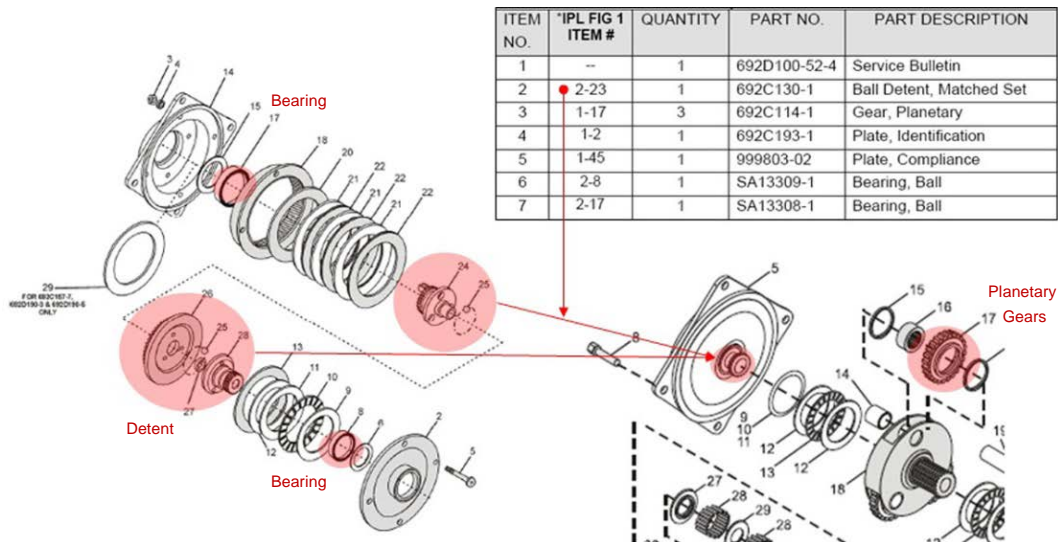
- Due to high operating loads, Nitralloy gears are susceptible to case crushing. Once the nitride case is compromised the cracks propagate causing gear failure.
- Gears made with carburized 9310 Steel are not as susceptible to case crushing failure mechanism



Solution

The 692D100-15 equipped with carburized 9310 steel detent assemblies has been approved and released

Repair services and parts required to implement SB692D100-52-4 are available now



If part number 692D190-5 (no back assembly) is purchased, then only items 3, 4 and 5 in the table below are required.

Implementation

AD 2015-12-11 requires that all 692D100-13 Rotary Actuators be upgraded to 692D100-15.

AD Effective date: July 2015

- 767 aircraft have 30 months to comply (*January 2018*)
- 777 aircraft have 72 months to comply (*July 2021*)

Based on Eaton SB 692D100-52-4, Rev 3 Table 1, approximately 3,400 actuators only need to have a compliance plate and re-identified. This intended to be done on aircraft. However, there are approximately 1,800 actuators that needs to be disassembled and modified.

Eaton value offer

Customer requirement	Eaton solution
Minimize cost	Discounted pricing based on commitment and quantities
Full work scope	Maximizes long term on-wing reliability
All inclusive service	Gear replacement and repair/overhaul included
Spares support	Seed units to support scheduled removal plans



Questions/Comments



Powering Business Worldwide

www.eaton.com/aerospace