

# OPPORTUNITY GUIDE

## CONSTRUCTION

### KEY TARGET ACCOUNTS

#### Commercial

Stadiums, Educational facilities,  
Grocery stores, Office buildings

#### Industrial

Chemical complexes,  
Pharmaceutical processing  
facilities, Food and beverage  
plants, Refineries

#### Healthcare

Hospitals, Nursing homes

#### Street lighting

Street lighting contractors

### ENCLOSED CCP

30-200 A Compact Circuit Protector  
available in NEMA 1, 3R, 4, 4X, or 12  
enclosures for  
compliance with  
NEC® 430.102(B).



### ARC FLASH PPE

- 12 calorie arc flash suit
- 40 calorie arc flash suit
- 40 calorie comfort arc flash suit
- Electrical glove kit
- 9-piece electrician's tool kit

Learn more at

[Eaton.com/  
bussmannseries/  
arcflash](http://Eaton.com/bussmannseries/arcflash)



### QUIK-SPEC PRODUCTS

- **Quik-Spec™ Coordination Panelboard (QSCP)** for the easiest selective coordination solution in the smallest footprint
- **Quik-Spec Power Module** switch and panel for easy specification to meet NEC® elevator disconnect requirements
- **CUBEFuse™ Safety Switch** for enhanced safety and application versatility



### SURGE PROTECTIVE DEVICES

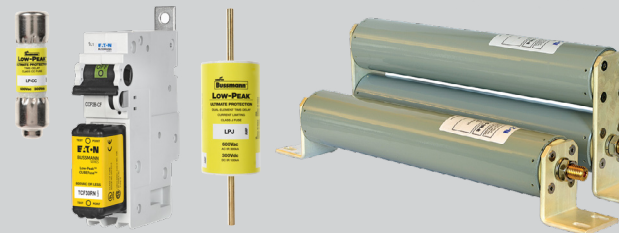


Comprehensive surge protection solutions can be integrated into the QSCP or used in conjunction with other assemblies to help meet NEC-mandated surge protection requirements.

Use at the service entrance, feeders or branch circuits.

### FUSES

- Fusible electrical distribution projects
- Low voltage branch circuit (Fuses Made Simple™ — Branch Circuit)
- Low voltage control circuit (Fuses Made Simple — Control Circuit)
- Medium voltage (E-Rated, R-Rated, PT and DIN-E)
- Revolutionary CUBEFuse with Compact Circuit Protector Base (cat. no. CCP2B)



### IN-LINE FUSE HOLDERS for street and parking lot lighting

- Breakaway and non-breakaway single-pole holders
- Breakaway dual-pole holders
- Neutral single-pole holders



### CABLE LIMITERS

- Protect electrical conductors — typically between the transformer and service entrance
- Remove the affected cable(s) service and permit the other conductors to continue to deliver power



### TOOLS and TRAINING

Visit [toolbox.bussmann.com](http://toolbox.bussmann.com) for access to tools including:

- Bussmann™ series product selector tools
- Product cross reference
- FC² Available Fault Current Calculator
- Power of space savings calculator

Visit [Eaton.com/bussmannseries](http://Eaton.com/bussmannseries) to learn about available training programs, which include live demonstrations in our *Paul P. Gubany Center for High Power Technology*.



© 2022 Eaton  
All Rights Reserved  
Publication No. 10849-2022  
February 2022

Eaton, Bussmann, CUBEFuse, Fuses Made Simple and Quik-Spec are valuable trademarks of Eaton in the U.S. and other countries. You are not permitted to use the Eaton trademarks without prior written consent of Eaton.

NEC is a trademark of the National Fire Protection Association, Inc.