

Detect. Alert. Evacuate

Types and functions of emergency lighting

EATON

Powering Business Worldwide

Emergency lighting

Types and functions

We will explore the different functions that emergency lighting can perform.

Exploring the various types and functions of emergency lighting

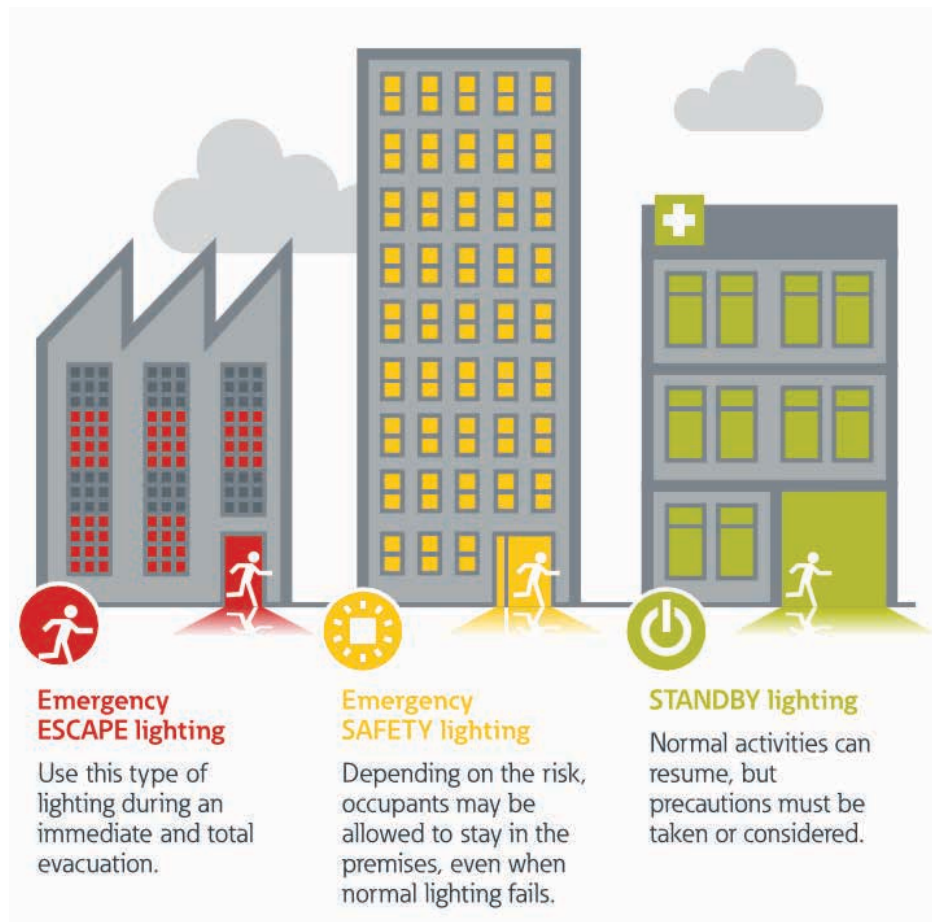
While legislation requires organisations to carry out risk assessments to ensure the safety of building occupants, legislation also states suitable lighting is provided in the event of a failure to supply normal lighting.

During the failure of normal lighting, it might not be necessary or appropriate to evacuate the premises. As we see in the diagram below, emergency lighting comes in a variety of types and can

therefore provide a range of functions – that may or may not be used strictly during emergencies.

Broadly speaking, the functions are as follows:

- Emergency escape lighting: provides illumination of escape routes, signs and special areas to help people leave the premises safely
- Emergency safety lighting: provides lighting to help people safely move through premises and/or leave the premises
- Standby lighting: powered by an alternative power supply, this lighting provides sufficient illumination to continue normal operations in the event of a total failure in mains power



Please note: standby lighting systems are highly specialised, and are typically used only in high-risk premises, such as hospitals.

It's also important to note, conventional emergency lighting may be required between the failure of normal supply and the availability of standby supply.

This positive confirmation speeds evacuation and avoids the 'false alarm' mentality, reducing the risk of death from fire.

Eaton
Eaton Middle East Headquarters
National Industries Park - Jebel Ali (South)
P.O. Box: 261768, Dubai, UAE
Eaton.ae

All Rights Reserved
May 2017

Eaton is a registered trademark.

All other trademarks are property
of their respective owners.
© 2017 Eaton

If you would like to find out more,
please contact us at

ContactUsME@eaton.com